

Royal Reforestation

Program -RRP-

-TREE SPONSORSHIP-

I. Reason and Intention

- Conserving the environment to avoid global warming in the Kingdom that will increase on the amounts of rain fall in the area and reduce on the temperatures that will enable increased output of agriculture products in the area thus increasing the standard of living for the Kingdom subjects.
- Poverty reduction in the Kingdom, as people get involved in commercial tree planting will increase their incomes i.e. sale of Timber from Cypress, Musizi, Mvule, Emitoma, and Eucalyptus. Thus a number of people will be employed in related activities such as transportation, sawing and manufacturing.
- Increased food production in the Kingdom, as we plant trees, i.e. fruit bearing trees, like Jack fruits, and Avocados, people will be enjoying the fruits at the same time conserving the environment. And the climate become more conducive as a result of tree planting in the kingdom, food production levels of beans, maize, onions, Irish potatoes, sweet potatoes, bananas, Soya beans, Cassava, etc. will increase due to good environmental climate that will be in the Kingdom.
- Supporting Government efforts, The government of Uganda is putting efforts towards conserving the environment by calling on people to start planting private forests and conserving the government forests and there reserves, thus when the Kingdom embrace the project of planting, it will be fulfilling the Governments plans of conserving the environment.
- Cooling ground temperatures and sheltering from direct sunlight allows food crops and other growth to return where they otherwise could not grow.
- Trees provide organic fertilizers, through the felling of their leaves.
- Trees will create microclimate conditions for life to flourish, provide home to wild animals, tree roots reduce water erosion, provide medicines and act as tourism attraction.
- Reforestation
- Employment for agricultural workers and foresters.
- Future fuel
- Tourism attraction
- The trees improve living standards for local people
- Tree roots stabilize river banks, reducing the risk of flooding
- They rebuild worn soils and improve agricultural productivity
- Through shade and by evaporating moisture from their leaves, trees can reduce daytime temperatures by about 5 degrees F and buildings by 20 degrees F
- Cooling ground temperatures and sheltering from direct sunlight allows food crops and other growth to return where they otherwise could not grow
- Attracting bees with pollen enabling them to make honey for trading purposes
- Birds and bats help spread seeds supporting bio-diversity and sustainability locally and across further regions
- Trees can act as natural wind breakers, and separate different types of crop farms
- They provide homes for indigenous wildlife
- They encourage the return of endangered species
- The roots reduce erosion in rain seasons and dry areas
- They replenish the ground with nutrients from the air such as nitrogen
- They retain groundwater supporting surrounding growth
- Trees provide organic fertilizer, through the felling of their leaves
- Leaves provide a high-protein, palatable animal forage and cattle fodder

- They sustain eco-system balance and bio-diversity
- They create microclimate conditions for life to flourish
- They have provided medicines for centuries including for; Malaria, heartburn, measles, lung diseases, rheumatism, flu, leprosy
- They can produce Mango, Apple, Guava, Papaya, Avocado, Olive, Lemon, Banana
- They provide nuts, protein and flavouring's
- They provide glue, soaps, beads for jewellery, bio-fuel etc.
- They also provide a sustainable source of timber for; cabinets, wardrobes, kitchens, desks/tables, chairs, doors, floors, paper, musical instruments, boats, agricultural tools

II. Environment conservation

As regards to environment, forests in the Kingdom have been depleted by the people in the areas. Bunyoro Kitara Kingdom was known as a green belt Kingdom with heavy forests and forest reserves all around, but due to increased demand for fuel and other economic activities as a result of increased population has caused deforestation in the Kingdom.

In the financial year 2010/2011 Bunyoro Kitara kingdom came up with a strategic plan of establishing nursery beds in its 265 perishes, intending to facilitate tree planting in the region.

However establishing the nursery beds for trees only is not enough to encourage people to involve in tree planting in the kingdom.

Therefore the Kingdom have decided to involve itself in the actual practice of planting the trees in the region were by planting trees for timber and those which bear fruits.

The Kingdom is planning to plant trees and re-forestation in areas of Musaija Mukuru, Rwampanga, Kibaale, Masindi–Port and Musoma as a strategy to conserve the environment starting with 100 acres in this year 2011.

The Kingdom will plant commercial spices of Cypress, Musizi, Nkalati, Mvule, Pine, Emitoma, and Eucalyptus, on other hand of fruit bearing trees, the Kingdom will plant Jackfruits, avocados Trees, and orange trees etc.

In order for the Kingdom attained improved environmental changes, it will involve itself, and sensitize the public about the importance of tree planting and using forests in a more friendly manner to benefit out of the existence.

The challenge to the Kingdom is how to sustain these forests and trees that will be planted in the kingdom.

- As regards to environment, forests in the Kingdom have been depleted by the people in the areas. Bunyoro Kitara Kingdom was known as a green belt Kingdom with heavy forests and forest reserves all around, but due to increased demand for fuel and other economic activities as a result of increased population has caused deforestation in the Kingdom.
- In the financial year 2010/2011 Bunyoro Kitara kingdom came up with a strategic plan of establishing nursery beds in its 265 perishes, intending to facilitate tree planting in the region.
- However establishing the nursery beds for trees only is not enough to encourage people to involve in tree planting in the kingdom.
- Therefore the Kingdom have decided to involve itself in the actual practice of planting the trees in the region were by planting trees for timber and those which bear fruits.
- The Kingdom is planning to plant trees and re-forestation in areas of Musaija Mukuru, Rwampanga, Kibaale, Masindi–Port and Musoma as a strategy to conserve the environment starting with 100 acres in this year 2011.
- The Kingdom will plant commercial spices of Cypress, Musizi, Nkalati, Mvule, Pine, Emitoma, and Eucalyptus, on other hand of fruit bearing trees, the Kingdom will plant Jackfruits, avocados Trees, and orange trees etc.

- In order for the Kingdom attained improved environmental changes, it will involve itself, and sensitize the public about the importance of tree planting and using forests in a more friendly manner to benefit out of the existence.
- The challenge to the Kingdom is how to sustain these forests and trees that will be planted in the kingdom.

III. Basics

Due to increased population of Bunyoro Kitara Kingdom, which is about 1.6 million people in the Kingdom, has extended pressure on the forests around for Land for cultivating, firewood and charcoals as a source of energy in the area.

Bunyoro Kitara Kingdom, has mobilized the masses to conserve the environment by providing tree seedlings to people in the region and launching campaigns over radios about the importance of planting trees. However less have been achieved, thus the Kingdom have decided to participate itself in the activity of tree planting and a forestation to conserve the depleted environment.

- For each designated area / ground we need a detailed map, if possible coloured and a photo.
- The sponsor should know where his tree(s) are / is planted.
- The sponsor may also visit in the future, his trees, so the tourism to the Kingdom is more interesting.

IV. Conclusion

The Project of Tree planting and a forestation will fulfill the following objectives:

- Conserving the environment to avoid global warming in the Kingdom that will increase on the amounts of rain fall in the area and reduce on the temperatures that will enable increased output of agriculture products in the area thus increasing the standard of living for the Kingdom subjects.
- Poverty reduction in the Kingdom, as people get involved in commercial tree planting will increase their incomes i.e. sale of Timber from Cypress, Musizi, Mvule, Emitoma, and Eucalyptus. Thus a number of people will be employed in related activities such as transportation, sawing and manufacturing.
- Increased food production in the Kingdom, as we plant trees, i.e. fruit bearing trees, like Jack fruits, and Avocados, people will be enjoying the fruits at the same time conserving the environment. And the climate become more conducive as a result of tree planting in the kingdom, food production levels of beans, maize, onions, Irish potatoes, sweet potatoes, bananas, Soya beans, Cassava, etc will increase due to good environmental climate that will be in the Kingdom.
- Supporting Government efforts, The government of Uganda is putting efforts towards conserving the environment by calling on people to start planting private forests and conserving the government forests and there reserves, thus when the Kingdom embrace the project of planting, it will be fulfilling the Governments plans of conserving the environment.
- Cooling ground temperatures and sheltering from direct sunlight allows food crops and other growth to return where they otherwise could not grow.
- Trees provide organic fertilizers, through the felling of their leaves.
- Trees will create microclimate conditions for life to flourish, provide home to wild animals, tree roots reduce water erosion, provide medicines and act as tourism attraction.
- The project will change the Bunyoro Kitara Kingdom in a new world by improving the environmental climate, provide employment , increase peoples incomes and standard of living,

increase the food production due to improved weather conditions, manufacturing and increased foreign exchange which is very necessary for development.

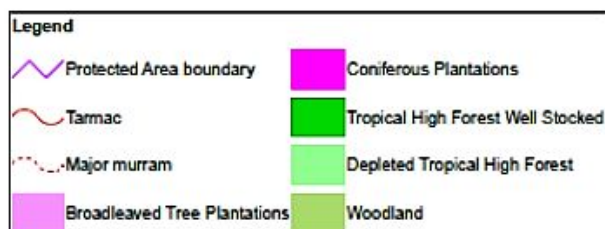
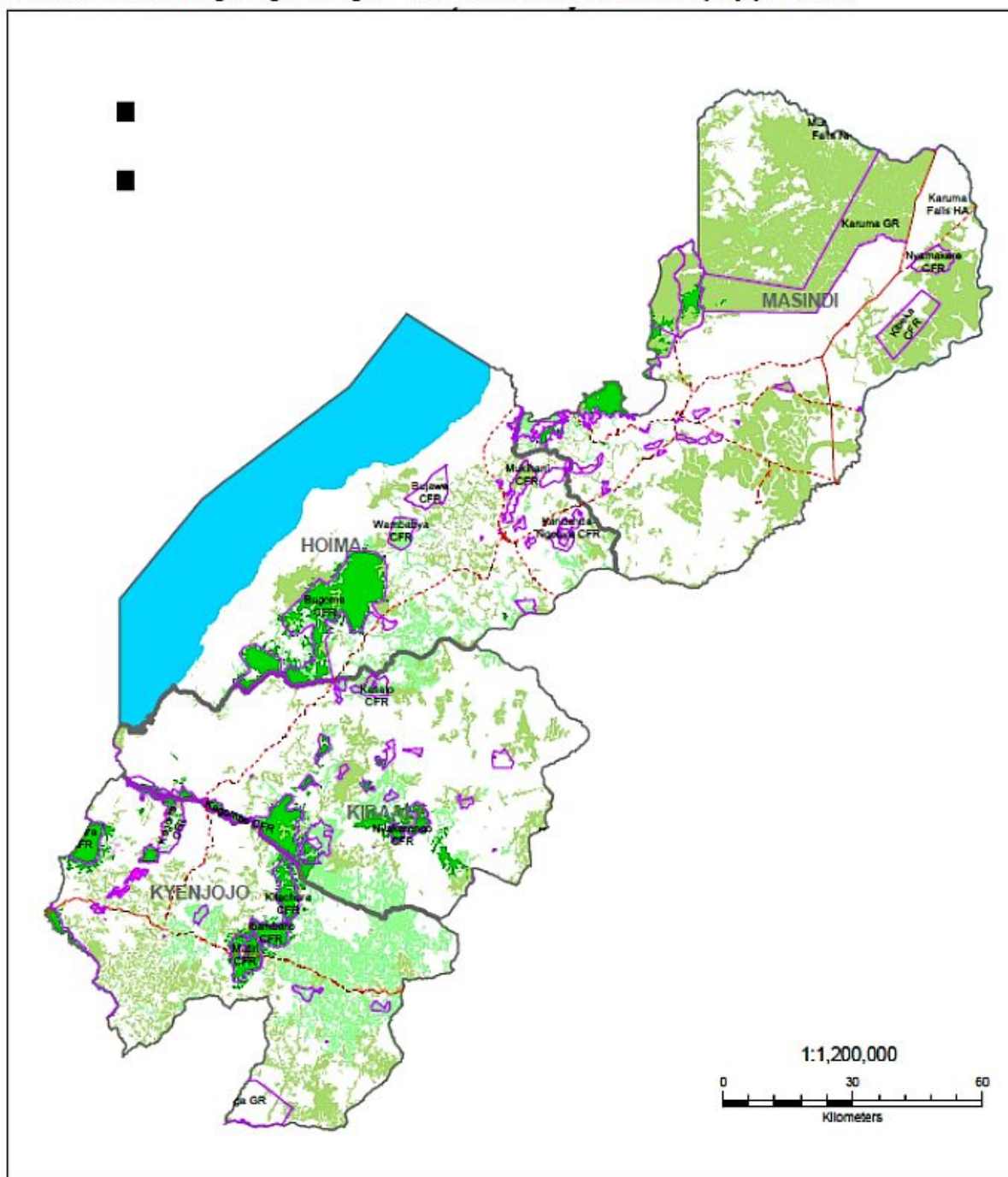
- Therefore when facilitation for tree planting is secured will enable the Kingdom to realize its dreams and attain its objectives of conserving the environment.

V. Grounds / Areas

- **Rwampanga**, Softwood plantation–Waisembe Hill reserve BN/C/38 (Bugahya) 14,26 sq. mls
- **Bigajuka**, Eucalyptus plantation BN/C/9 (Bugahya) 0,02 sq.mls
- **Kijubya**, Eucalyptus plantation BN/C/8 (Bugahya) 0,13 sq.mls
- **Musoma**, Softwood plantation BN/C/52E (Bwijanga) 278,00 Ha
- **Masindi**, Eucalyptus plantation BN/C/33 (Bwijanga) 38,85 Ha
- **Masindi**, Softwood plantation BN/C/34 (Bwijanga) 18,00 Ha
- **Kakumiro**, Softwood plantation BN/C/16 (Bugangaizi) 256,00 Ha
- **Kagadi**, Eucalyptus plantation BN/C/12 (Buyaga) 80,00 Ha
- **Kibaale**, Softwood plantation BN/C/12(Buyaga) 80,00 Ha
- **Ndaiga**, Eucalyptus plantation BN/C/12(Buyaga) 2,00 Ha

VI. Maps of the Grounds / Areas:

Forest Cover in Budongo-Bugoma Region - Masindi, Hoima, Kibaale, and Kyenjojo Districts



Datum: WGS1984 UTM Zone 36N
 Projection: Transverse Mercator
 False Easting: 500000.000000
 False Northing: 0.000000
 Central Meridian: 33.000000
 Scale Factor: 0.999600
 Latitude Of Origin: 0.000000
 Linear Unit: Meter

(Source: NFA National Biomass Unit, 2010 based on 2005 data).

VII. Photo



HM the Omukama planted trees.



This is the state of some of the forests in Bunyoro!

VIII. Types of Trees

• Avocado	<i>Persea gratissima</i>	15 US\$, 800 pieces
• Cypress	<i>Cupressus</i>	25 US\$, 3000 pieces
• Emitoma (fig tree)	<i>Ficus carica</i>	50 US\$, 1500 pieces
• Eucalyptus	<i>Eucalyptus</i>	50 US\$, 1000 pieces
• Jackfruits	<i>Artocarpus heterophyllus</i>	10 US\$, 1000 pieces
• Musizi (Umbrella tree)	<i>Maesopsis eminii</i>	25 US\$, 1500 pieces
• Mvule (mahogany red)	<i>Meliaceae</i>	20 US\$, 2500 pieces
• Oranges	<i>Citrus×aurantium L.</i>	25 US\$, 2500 pieces
• Pine	<i>Pinus</i>	25 US\$, 2500 pieces

IX. Types of Tree Sponsorships

1. Sponsor Planting Tree “Bronze”

May you want to sponsor the planting of **one tree**? We now offer the planting of tree such as

○ Avocado	<i>Persea gratissima</i>	15 US\$ / per tree
○ Cypress	<i>Cupressus</i>	25 US\$ / per tree
○ Emitoma (fig tree)	<i>Ficus carica</i>	50 US\$ / per tree
○ Eucalyptus	<i>Eucalyptus</i>	50 US\$ / per tree
○ Jackfruits	<i>Artocarpus heterophyllus</i>	10 US\$ / per tree
○ Musizi (Umbrella tree)	<i>Maesopsis eminii</i>	25 US\$ / per tree
○ Mvule (mahogany red)	<i>Meliaceae</i>	20 US\$ / per tree
○ Oranges	<i>Citrus aurantium L.</i>	25 US\$ / per tree
○ Pine	<i>Pinus</i>	25 US\$ / per tree

Your tree will be labelled.

Please choose the type of tree you would like to sponsor and choose the Ground/Area. We will contact you to discuss further details.

Grounds / Areas:

○ Rwampanga , Softwood plantation–Waisembe Hill reserve BN/C/38 (Bugahya)	14,26 sq. mls
○ Bigajuka , Eucalyptus plantation BN/C/9 (Bugahya)	0,02 sq.mls
○ Kijubya , Eucalyptus plantation BN/C/8 (Bugahya)	0,13 sq.mls
○ Musoma , Softwood plantation BN/C/52E (Bwijanga)	278,00 Ha
○ Masindi , Eucalyptus plantation BN/C/33 (Bwijanga)	38,85 Ha
○ Masindi , Softwood plantation BN/C/34 (Bwijanga)	18,00 Ha
○ Kakumiro , Softwood plantation BN/C/16 (Bugangaizi)	256,00 Ha
○ Kagadi , Eucalyptus plantation BN/C/12 (Buyaga)	80,00 Ha
○ Kibaale , Softwood plantation BN/C/12(Buyaga)	80,00 Ha
○ Ndaiga , Eucalyptus plantation BN/C/12(Buyaga)	2,00 Ha

Certificate of Sponsorship

We hereby attest & confirm that on the date given

John Doe

has sponsored a tree, of broadleaf and native type such as is defined below and has been demarked and identified in such a way as to remain in perpetuity or until the tree is felled by old age, fire, or act of God, planted in honour of aforesaid sponsor in the grounds of Omukama Rukirabasajja Kabalega / Kibaale.

The sapling so planted is of the form:

Maesopsis eminii – Musizi – (Umbrella tree)

Pursuant to the foregoing, we attach our heritable seal & sign to certify that within twelve months, the sponsored tree shall be planted and nurtured such that at their earliest convenience the sponsor may visit & examine their charge.

_____ day of _____ anno Domini _____

Omukama Rukirabasajja Agutamba Solomon Gafabusa Iguru I.

49th Omukama (King) of the Kingdom Bunyoro-Kitara | 27th Omukama in the Sobito dynasty

www.royal-reforestation-program.bunyoro-kitara.com

Certificate No.: _____

2. Sponsor Planting Trees “Silver”

May you want to sponsor the planting of **more than one tree** with a minimum of sponsorship of **five trees**? We now offer the planting of trees such as

_____	Avocado	<i>Persea gratissima</i>	15 US\$ / per tree
_____	Cypress	<i>Cupressus</i>	25 US\$ / per tree
_____	Emitoma (fig tree)	<i>Ficus carica</i>	50 US\$ / per tree
_____	Eucalyptus	<i>Eucalyptus</i>	50 US\$ / per tree
_____	Jackfruits	<i>Artocarpus heterophyllus</i>	10 US\$ / per tree
_____	Musizi (Umbrella tree)	<i>Maesopsis eminii</i>	25 US\$ / per tree
_____	Mvule (mahogany red)	<i>Meliaceae</i>	20 US\$ / per tree
_____	Oranges	<i>Citrus aurantium L.</i>	25 US\$ / per tree
_____	Pine	<i>Pinus</i>	25 US\$ / per tree

Your trees will be labelled.

Please choose the type of tree you would like to sponsor and choose the Ground/Area. We will contact you to discuss further details.

Ground / Area:

- **Rwampanga**, Softwood plantation–Waisembe Hill reserve BN/C/38 (Bugahya) 14,26 sq. mls
- **Bigajuka**, Eucalyptus plantation BN/C/9 (Bugahya) 0,02 sq.mls
- **Kijubya**, Eucalyptus plantation BN/C/8 (Bugahya) 0,13 sq.mls
- **Musoma**, Softwood plantation BN/C/52E (Bwijanga) 278,00 Ha
- **Masindi**, Eucalyptus plantation BN/C/33 (Bwijanga) 38,85 Ha
- **Masindi**, Softwood plantation BN/C/34 (Bwijanga) 18,00 Ha
- **Kakumiro**, Softwood plantation BN/C/16 (Bugangaizi) 256,00 Ha
- **Kagadi**, Eucalyptus plantation BN/C/12 (Buyaga) 80,00 Ha
- **Kibaale**, Softwood plantation BN/C/12(Buyaga) 80,00 Ha
- **Ndaiga**, Eucalyptus plantation BN/C/12(Buyaga) 2,00 Ha

Certificate of Sponsorship

We hereby attest & confirm that on the date given

John Doe

has sponsored a tree, of broadleaf and native type such as is defined below and has been demarcated & identified in such a way as to remain in perpetuity or until the tree is felled by old age, infirmity or will of God, planted in honour of aforesaid sponsor in the grounds of Omukama Ek. L. Kabaka / Kibaale.

The sapling is planted in the form:

***Maesopsis eminii* – Musizi – (Umbrella tree)**

Pursuant to the foregoing, we attach our heritable seal & sign to certify that within twelve months, the sponsored tree shall be planted and maintained such that at their earliest convenience the sponsor may visit & examine their charge.

_____ day of _____ anno Domini _____

Omukama Rukirabasajja Agutamba Solomon Gafabusa Iguru I.

49th Omukama (King) of the Kingdom Bunyoro-Kitara | 27th Omukama in the Sobirwa dynasty

www.royal-reforestation-program.bunyoro-kitara.com

Certificate No.: _____

3. Sponsor Planting Trees “Gold”

May you want to sponsor the planting of **more than 20 trees**? We now offer the planting of trees such as

_____ Avocado	<i>Persea gratissima</i>	15 US\$ / per tree
_____ Cypress	<i>Cupressus</i>	25 US\$ / per tree
_____ Emitoma (fig tree)	<i>Ficus carica</i>	50 US\$ / per tree
_____ Eucalyptus	<i>Eucalyptus</i>	50 US\$ / per tree
_____ Jackfruits	<i>Artocarpus heterophyllus</i>	10 US\$ / per tree
_____ Musizi (Umbrella tree)	<i>Maesopsis eminii</i>	25 US\$ / per tree
_____ Mvule (mahogany red)	<i>Meliaceae</i>	20 US\$ / per tree
_____ Oranges	<i>Citrus aurantium L.</i>	25 US\$ / per tree
_____ Pine	<i>Pinus</i>	25 US\$ / per tree

Your trees will be labelled, and we will place a brass plaque with your name at the site of the planting.

Please choose the type of tree you would like to sponsor and choose the Ground/Area. We will contact you to discuss further details.

Ground / Area:

- **Rwampanga**, Softwood plantation–Waisembe Hill reserve BN/C/38 (Bugahya) 14,26 sq. mls
- **Bigajuka**, Eucalyptus plantation BN/C/9 (Bugahya) 0,02 sq.mls
- **Kijubya**, Eucalyptus plantation BN/C/8 (Bugahya) 0,13 sq.mls
- **Musoma**, Softwood plantation BN/C/52E (Bwijanga) 278,00 Ha
- **Masindi**, Eucalyptus plantation BN/C/33 (Bwijanga) 38,85 Ha
- **Masindi**, Softwood plantation BN/C/34 (Bwijanga) 18,00 Ha
- **Kakumiro**, Softwood plantation BN/C/16 (Bugangaizi) 256,00 Ha
- **Kagadi**, Eucalyptus plantation BN/C/12 (Buyaga) 80,00 Ha
- **Kibaale**, Softwood plantation BN/C/12(Buyaga) 80,00 Ha
- **Ndaiga**, Eucalyptus plantation BN/C/12(Buyaga) 2,00 Ha

Certificate of Sponsorship

We hereby attest & confirm that on the date given

John Doe

has sponsored a tree, of broadleaf and native type such as is defined below and has been demarked and identified in such a way as to remain in perpetuity or until the tree is felled by old age, fire, storm or any other cause of God, planted in honour of aforesaid sponsor in the grounds of Omukama Elwanda Z. Kabalega / Kibaale.

The sapling so planted is of the form:

Maesopsis eminii - Musizi - (Umbrella tree)

Pursuant to the foregoing, we attach our heritable seal & sign to certify that within twelve months, the sponsored tree shall be planted and nurtured such that at their earliest convenience the sponsor may visit & examine their charge.

_____ day of _____ anno Domini _____

Omukama Rukirabasaija Agutamba Solomon Gatabusa Iguru Z.

49th Omukama (King) of the Kingdom Bunyoro-Kitara | 27th Omukama in the Sobito dynasty

www.royal-reforestation-program.bunyoro-kitara

Certificate No.: _____

4. Royal Reforestation “Bench”

- The Royal Reforestation Bench is built from sustainable hardwood; it seats 3–4 and has a plaque with your message on it. We place the bench permanently in the designated grounds/area at the Kingdom Bunyoro-Kitara.
- On receipt of your order we will contact you asking for details of the plaque
- Furthermore, you save valuable jobs.

Price: **US\$ 150,00**



X. Implementation of the Tree Sponsorship

- H.M the Omukama designates grounds / areas in the Kingdom and giving them distinctive names (see V.).
- H.M the Omukama is the patron of the “Royal Reforestation program, Kingdom Bunyoro-Kitara”
- For marketing purposes, the H.M the Omukama planted personally in each designated grounds / area a “King Tree”, which is marked outstanding.
- Maybe before each “King Tree” there is situated a “King Bench” with a separate label.
- From every Royal Tree planting a photo is taken, which then is used as an incentive for the sponsors.
- Maps and photos are produced from the grounds / areas and will be passed as a file to the ARKBK and HMB e.V..
- The offer for the sponsorship will be posted on the website (www.royal-reforestation.bunyoro-kitara.org) and marketed aggressively.
- HM the Omukama designate a responsible contact person for this “Royal Reforestation program”, which is responsible for implementation.
- The “ARKBK CLBG” and the “Association for Humanity for the Banyoro” (HMB e.V.) offer the Tree Sponsorship.
- Once the money has arrived on the account, a certificate will issued and sent to the sponsor via e-mail.
- The responsible person in the Kingdom receives a message, and is responsible for the planting.

Contact:

Peter F. Gummersbach, Esq., 1st OEBKK, GCCK, KJ, KCR

President of the ARKBK CLBG

Advisor of H.M the Omukama and H.M the Omugo and the Bunyoro-Kitara Kingdom

Advisor of the Royal Government and the Royal Ministers

Ex officio Member of the Supreme Council

Dr. h.c. en Educación –International University of Panama-

Internet:

www.bunyoro-kitara.org

E-Mail:

arkbk.president@bunyoro-kitara.org